

# PLATINUM MELAMINE BOARD

Designed for Everyday Living, Stylish and Easy to Maintain.




**PLATINUM MELAMINE BOARD**

## NATURE-INSPIRED, DURABLE DESIGN SOLUTIONS

Introducing Platinum Melamine Board, a premium decorative board collection featuring UV Double Sided finishes in Ultra Matte, Ultra Gloss, and Synchronised Woodgrain. Ideal for contemporary cabinetry, wardrobes, vanities, kitchens and more.

Elevate your kitchen experience with our Platinum Melamine Boards, where quality meets sophistication.

**FEATURES**

### CRAFTED FOR STYLE AND DURABILITY

Platinum Melamine offers a refined, high-performance decorative board solution, available in three distinct finishes to suit a wide range of interior applications. All boards are manufactured using premium E0 HMR MDF and our UV double-sided Ultra Matte, Ultra Gloss and Woodgrain finishes for consistency and durability.

### KEY FEATURES


**HIGH UV RESISTANCE**

UV-cured, double-sided Ultra Matte and Ultra Gloss surfaces.


**UNMATCHED DURABILITY**

E0 HMR MDF core for enhanced durability and reduced emissions.


**EASY TO CLEAN**

Low maintenance, anti-fingerprint, scratch and stain-resistant


**AESTHETICALLY FLEXIBLE**

Natural synchronised woodgrain for authentic texture, along with matching edge tapes and screw cover caps.


**VERSATILE APPLICATIONS**

**Suitable for vertical applications:** doors, panels, wardrobes, and furniture.

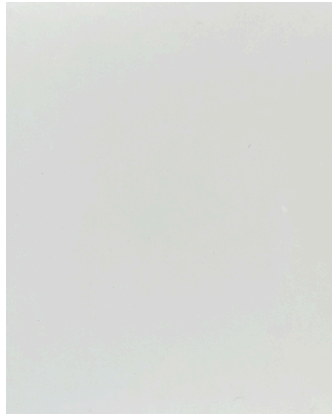


## EXPLORE THE FULL PLATINUM MELAMINE RANGE

### ULTRA MATTE (UV DOUBLE SIDED)



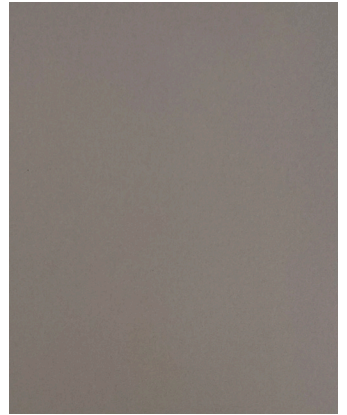
SNOWFALL



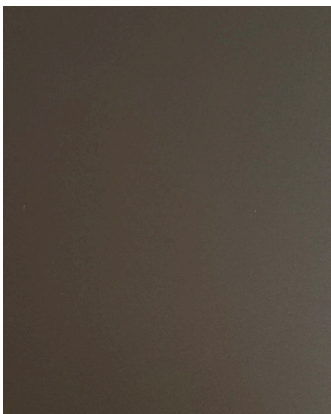
WARM WHITE



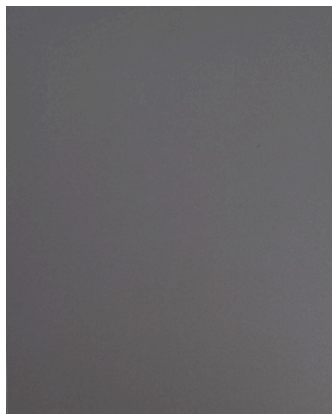
ALABASTER



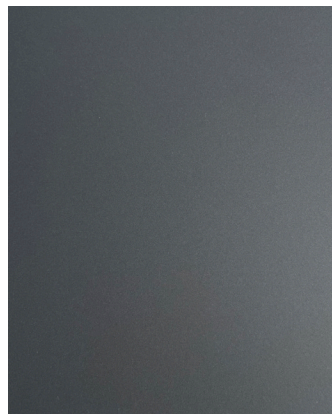
FOREST FLOOR



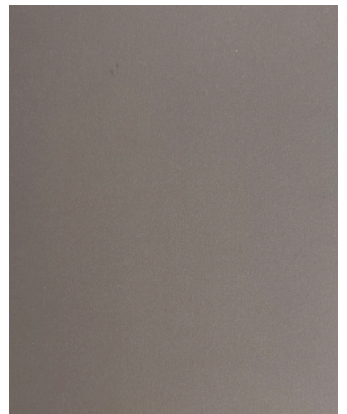
LANDSCAPE



STORM



TERRAIN



DESERT



CANYON



BLACK INK



### MATCHING ACCESSORIES

Platinum Melamine boards are supported by a full range of colour-matched PVC edge tapes, pre-primed and Laser edge, carcass boards, and stick-on screw cover caps for a complete cabinetry solution.



**SYNCHRONISED WOODGRAIN (DOUBLE SIDED)**



**DRIFTWOOD**



**HONEY OAK**



**RUSTIC OAK**



**AUTUMN OAK**



**BURNT OAK**



**ELM**



**CHARRED WOOD**

**ULTRA GLOSS (UV DOUBLE SIDED)**



**FROST**



**MATCHING ACCESSORIES**

Platinum Melamine boards are supported by a full range of colour-matched PVC edge tapes, pre-primed and Laser edge, carcass boards, and stick-on screw cover caps for a complete cabinetry solution.

## PRODUCT INFORMATION

TYPE	COLOUR	SHEET SIZE	FINISH
Platinum Melamine	Snowfall	18 x 1220 x 2440	UVDS Ultra Matte
Platinum Melamine	Forest Floor	18 x 1220 x 2440	UVDS Ultra Matte
Platinum Melamine	Desert	18 x 1220 x 2440	UVDS Ultra Matte
Platinum Melamine	Landscape	18 x 1220 x 2440	UVDS Ultra Matte
Platinum Melamine	Storm	18 x 1220 x 2440	UVDS Ultra Matte
Platinum Melamine	Terrain	18 x 1220 x 2440	UVDS Ultra Matte
Platinum Melamine	Canyon	18 x 1220 x 2440	UVDS Ultra Matte
Platinum Melamine	Black Ink (NEW)	18 x 1220 x 2440	UVDS Ultra Matte
Platinum Melamine	Frost	18 x 1220 x 2440	UVDS Ultra Gloss
Platinum Melamine	Driftwood	18 x 1220 x 2440	Woodgrain
Platinum Melamine	Honey Oak	18 x 1220 x 2440	Woodgrain
Platinum Melamine	Rustic Oak	18 x 1220 x 2440	Woodgrain
Platinum Melamine	Autumn Oak	18 x 1220 x 2440	Woodgrain
Platinum Melamine	Burnt Oak	18 x 1220 x 2440	Woodgrain
Platinum Melamine	Elm	18 x 1220 x 2440	Woodgrain
Platinum Melamine	Charred Wood	18 x 1220 x 2440	Woodgrain

\*For technical information, please contact your local representative. Images for illustration purposes only. Colour may vary.

# SPECIFICATIONS AND MATERIAL CARE

## MATERIAL DETAILS

- UV-cured lacquer for durability and finish integrity
- E0 HMR MDF board core (Zero Formaldehyde Emission)
- Suitable for vertical interior use only

## EDGE TAPE OPTIONS

### PVC Pre-Primed:

- Ultra Matte, Ultra Gloss, Woodgrain
- 23mm x 1mm x 100mtr cut to length/10mtr

### PVC Pre-Primed all colours:

- 40mm x 1mm x 100mtr cut to length/10mtr

### LASER Edge all colours:

- 23mm x 1mm x 100mtr cut to length/10mtr

### LASER Edge Carcass White Satin:

- 23mm x 1mm x 200mtr

### Carcass Pre-Primed:

- White Satin/Gloss/Natural Embossed/Black Embossed
- 23mm x 1mm x 100mtr

### White Satin Pre-Primed:

- 23mm x 1mm x 200mtr
- 23mm x 2mm x 100mtr
- 29mm x 1mm x 100mtr

## SCREW COVER CAPS OPTIONS

- 12mm (140/sheet)
- 25mm (40/sheet)

## CARCASS BOARD OPTIONS

- Available in White or Black MDF E0; either standard or High Moisture Resistant.
- Sizes: 16mm & 18mm x 1220mm x 2440mm
- Finish options: White Satin/Gloss/Natural Embossed/Black Embossed
- Raw MDF E0 (standard): Also available on request

## STORAGE AND HANDLING

Store Platinum Melamine boards in a well-ventilated, dry environment with stable temperature and humidity to prevent warping or surface damage. Avoid direct sunlight, dust, and pests by using shading and protective packaging. Stack panels safely, heavy on bottom, light on top, using pallets or shelving to avoid ground contact. Warehouses should be clean, pest-controlled, and fire-safe.

## CLEANING AND DOOR PANEL CARE

Clean surfaces with a soft damp cloth. Use only warm soapy water or mild, neutral detergents, avoid harsh chemicals or abrasives that may damage the UV finish. Protect from scratches by avoiding sharp objects and adding soft mats inside cabinetry. Always open and close doors gently to prevent surface impact.

## SUNLIGHT AND WATER PROTECTION

Prolonged sun exposure can cause discolouration; use blinds or curtains to reduce fading. Keep panels dry, wipe any spills immediately and consider using waterproof strips on cabinetry to minimise water ingress.

## WARRANTY POLICY

10 Years

# READY TO CREATE YOUR DREAM KITCHEN?

FOR QUOTES, ORDERS OR SAMPLES, CONTACT OUR BRANCHES

---

## **AUCKLAND**

7 Reg Savory Place, East Tāmaki  
Auckland 2013 New Zealand

**+64 9 573 0145**

---

## **AUCKLAND NORTH**

123 Diana Drive Wairau Valley  
Auckland 6240 New Zealand

**+64 9 442 4051**

---

## **HAMILTON**

22B Sunshine Avenue Te Rapa  
Hamilton 3200 New Zealand

**+64 7 850 4900**

---

## **CHRISTCHURCH**

93 Buchan Street Sydenham  
Christchurch 8023 New Zealand

**+64 3 365 7557**

---

## **WELLINGTON**

166 Gracefield Road Lower Hutt  
Wellington 5010 New Zealand

**+64 4 589 0221**

---

## **DUNEDIN**

33 McBride Street South  
Dunedin 9012

**+64 3 471 9233**

---

